

ILLUSTRATED PARTS CATALOG

Designs, materials, weights, specifications, and dimensions for equipment or replacement parts are subject to change without notice.

Bunn-O-Matic Corporation

Post Office Box 3227, Springfield, Illinois 62708-3227

Phone (217) 529-6601 | Fax (217) 529-6644

Technical Support Phone (800) 420-2866

BUNN-O-MATIC COMMERCIAL PRODUCT WARRANTY

Warranty statements and information can be found on our website. Please visit <https://commercial.bunn.com/support/warranty-lookup> for further details.

CONTENTS

BUNN-O-MATIC COMMERCIAL PRODUCT WARRANTY	2
MAIN FRAME, PANELS & DRIP TRAY ASSEMBLY.....	4
UPPER CABINET	6
PLATFORM BASE & TRAY ASSEMBLIES	8
INNER AND OUTER DOOR ASSEMBLY	10
JDF-2X REFRIGERATION GROUP	12
Refrigeration System.....	12
JDF-2X REFRIGERATION GROUP	14
Condenser Fan Assembly.....	14
WATER TANK ASSEMBLY.....	16
Water Tank Inlet Line & Product Coil	18
Water Circulation Pump & Lines	20
DISPENSE PLATFORM ASSEMBLY	22
Dispense Valve & Nozzle Assembly (Exploded).....	24
ELECTRICAL COMPONENTS.....	26
WIRING HARNESSSES & POWER CORD.....	28

TIPS:



To **Search/Find** content in this document, use "**Ctrl+F**" (PC)

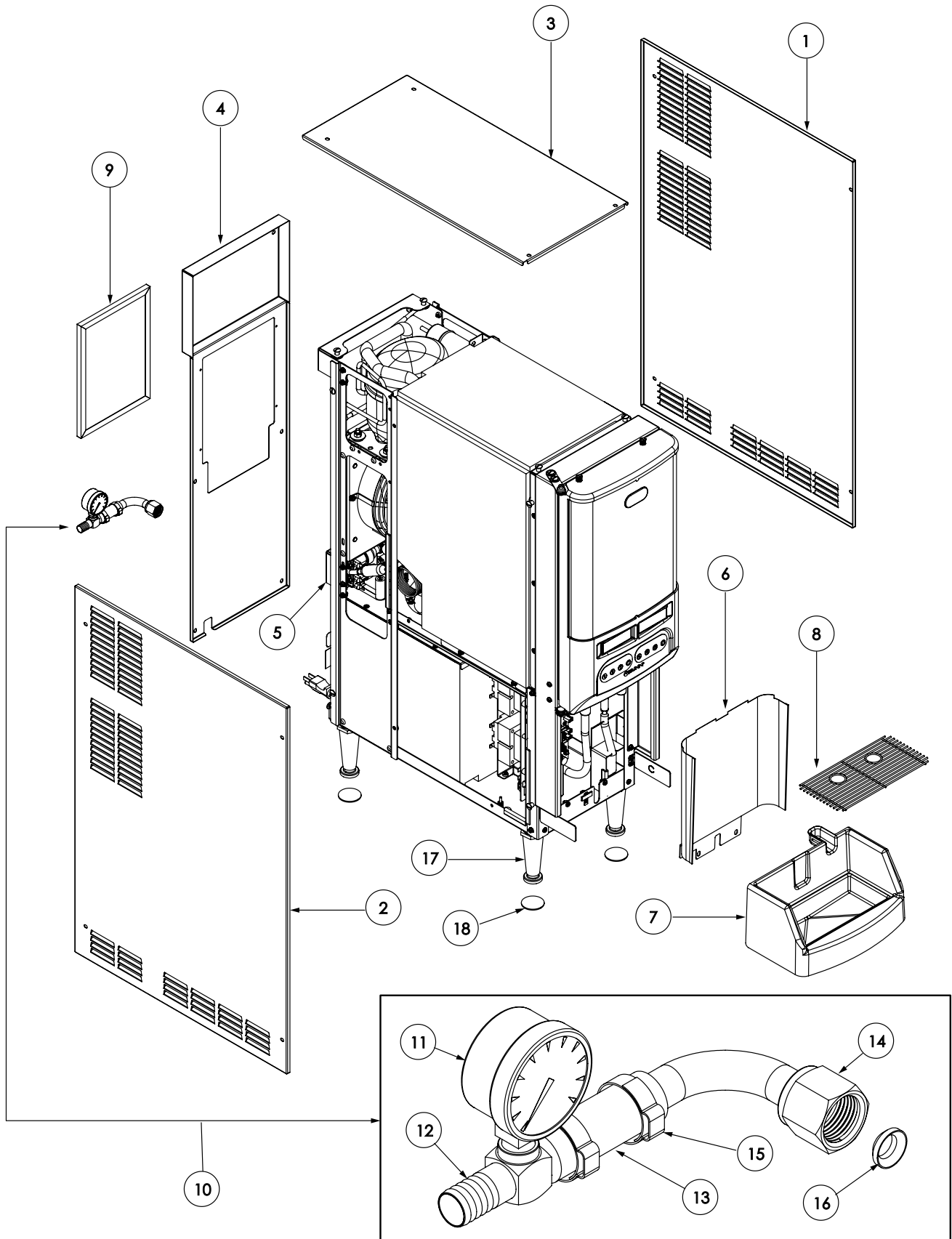


To **Search/Find** content in this document, use "**Command+F**" (Mac)

MAIN FRAME, PANELS & DRIP TRAY ASSEMBLY



JDF-2X



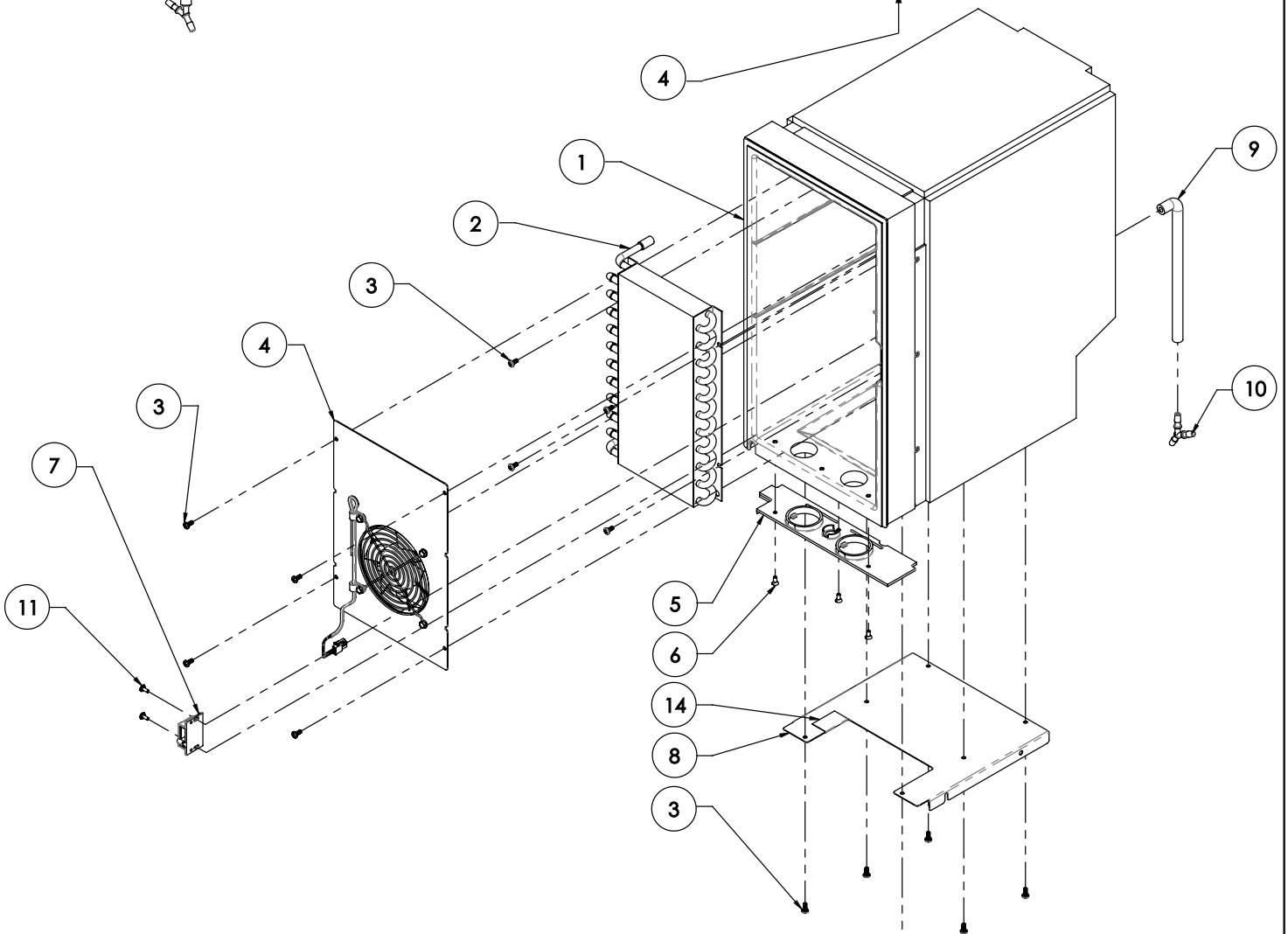
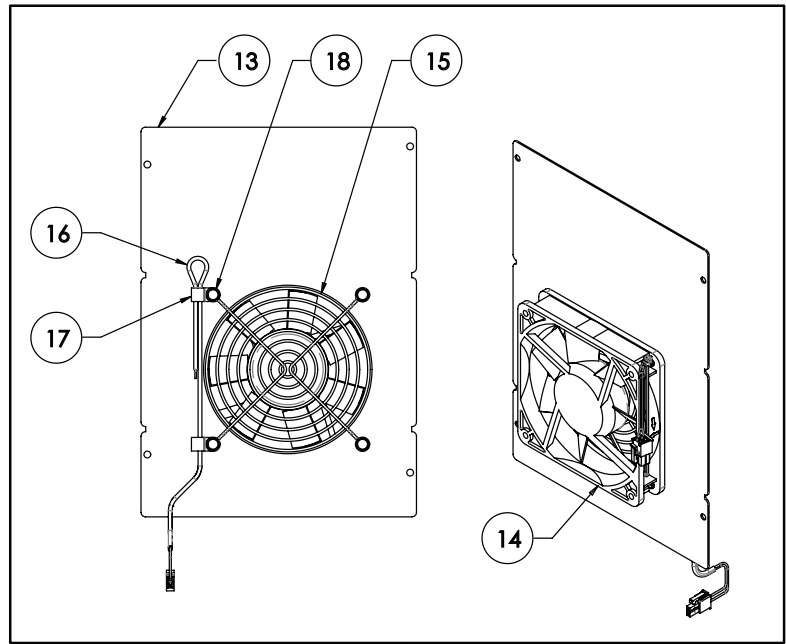
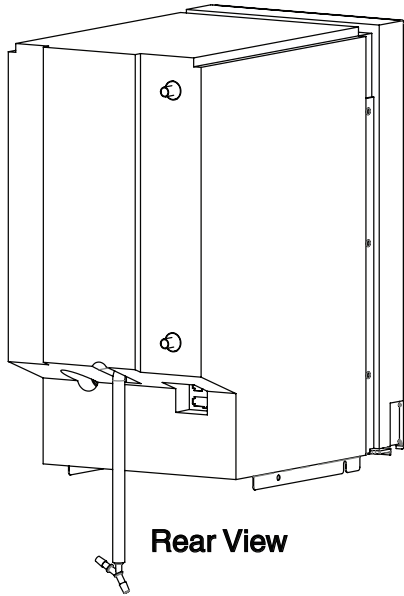
MAIN FRAME, PANELS & DRIP TRAY ASSEMBLY

ITEM	QTY	DESCRIPTION	PART NO.	NOTES
1	1	PANEL, SIDE RIGHT JDF-2X/4X SST	58926.0005	NS
	4	SCREW,TRH SLTD W/SERR10-32x.38	02331.0000	
2	1	PANEL, SIDE LEFT JDF-2X/4X SST	58926.0004	NS
	4	SCREW,TRH SLTD W/SERR10-32x.38	02331.0000	
3	1	PANEL, TOP JDF-2X SST	58927.0002	NS
	4	SCREW,TRH SLTD W/SERR10-32x.38	02331.0000	
4	1	PANEL WLDMT,BACK JDF-2X SST	58930.0004	NS
	6	SCREW,TRH SLTD W/SERR10-32x.38	02331.0000	
5		BRACKETWLDMT, INLETVALVE JDF-2SVPDS	58932.0001	NS
	2	SCREW,TRH SLTD W/SERR10-32x.38	02331.0000	
6	1	PANEL, SPLASH	35998.0003	
	2		02308.0000	
7	1	TRAY ASSY, EXTENDED DRIP	44015.1001	
8		WIRE GRILL, DRIP TRAY	26801.0005	
9	1	FILTER, AIR JDF-2S/4S W/ VELCRO	35164.1001	
10	1	KIT, 1/2 INLET PRESSURE GAUGE ASSY	57524.1000	
11	1	GAUGE, PRESSURE 100 PSI 1/8 NPT	37898.0000	
12	1	TEE, .50 BARB RUN X .125 MPTSSTF-7603	57523.0000	
13	1	HOSE, .510 ID X 2.0 LG BRAIDED WHT LINE		Order Item 19
14	1	FITTING,90° .50 FFL X.50 BARB SST F-7191	33151.0006	
15	2	CLAMP, SST-.701/.827 DIA 21.0mm	21275.0014	
16	1	GASKET, .50 FL WHT NYLON F-8011	33149.0002	
17	1	KIT, LEG 4.0 ADJ BLK-FLG FT .375-1, QTY-4	26528.1000	
18	4	PAD, NON-SKID	03996.0000	
The following items are not illustrated				
19		HOSE, BRAIDED .510 ID x 12.0 WHT LINE	54492.1000	
		HOSE, BRAIDED .510 ID x 36.0 WHT LINE	54492.1001	
		HOSE, BRAIDED .510 ID x 120.0 WHT LINE	54492.1002	

UPPER CABINET



JDF-2X



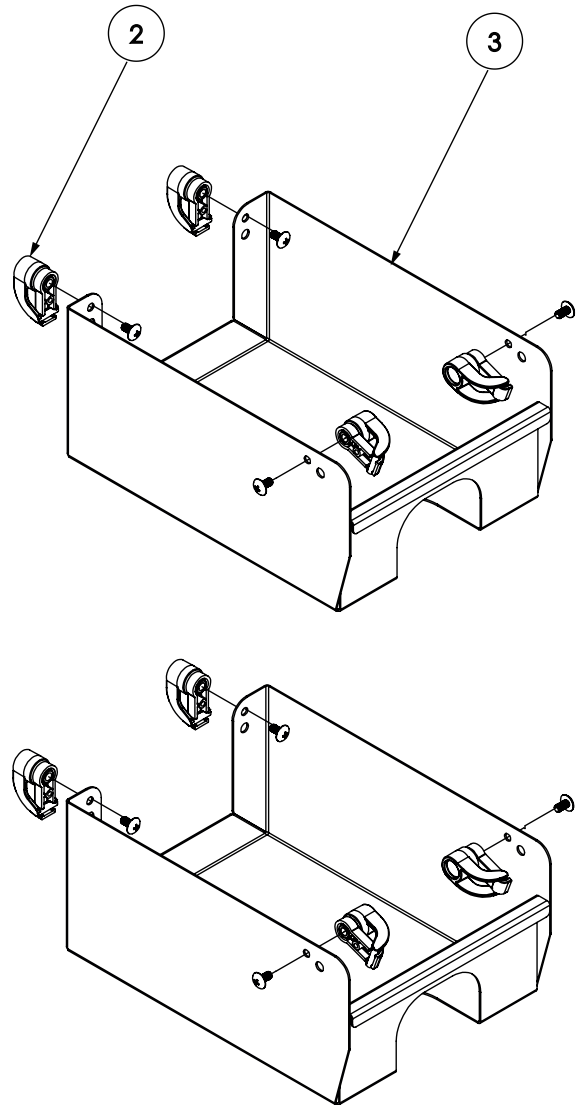
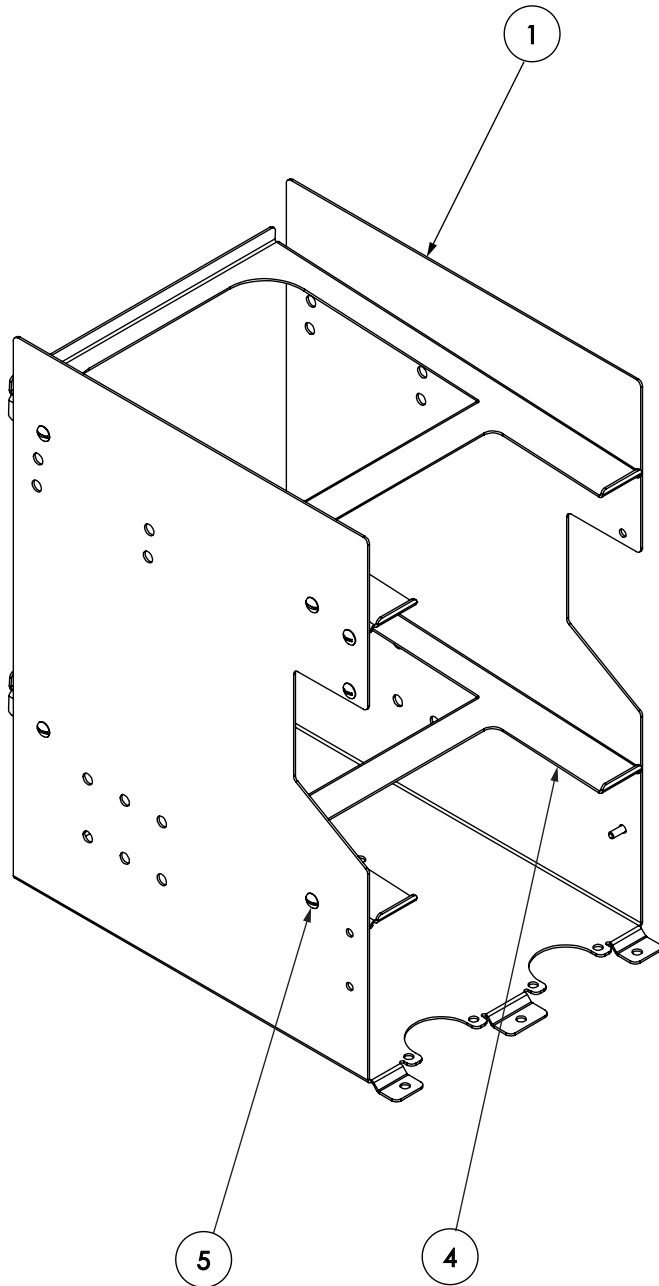
UPPER CABINET

ITEM	QTY	DESCRIPTION	PART NO.	NOTES
1	1	CABINET ASSY, UPPER FOAMED FAST FLOW	38857.1004	
2	1	COIL, WATER CABINET JDF-2S	56904.0001	
3	14	SCREW, PNH PHH #8-16 X .375 LG TRI-LOBE	24544.0002	
4	1	FAN ASSY, 120 X 120 X 25 JDF-2S FF		
5	1	PLATE, CABINET BOTTOM CLOSURE-W/WATER	34784.0001	
6	3	SCREW, FLH SLTD SST 8-32 X .38	01359.0000	
7	1	CATCH, 10 LB DOOR LATCH	34666.0002	
8	1	PLATE, MTG CABINET JDF-2S		
9	1	TUBE,SILICONE .25ID X 9.0 LG		Order Item 19
10	1	FITTING,"Y" BARB .25 ID HOSE	37290.0001	
11	2	SCREW, TRH SERR SST 6-32x.38	01347.0000	
12	1	WIRING HARN, DOOR JDF-2S VPDS	41202.0013	Not Illustrated, Go to Wiring Harnesses
13	1	BRACKET, FAN 120 X 120 X 25 JDF-2S FF		
14	1	FAN ASSY W/TERMINALS-24VDC	33297.0003	
15	1	GUARD, CABINET FAN JDF-2S/4S	34010.0001	
16	1	SENSOR ASSY, TEMPERATURE	43694.0000	
17	2	CLAMP, CABLE - NYLON NAT .250 ID	05920.0000	
18	4	SCREW, HEX HD WSHR 10-24 TRILOBE	38616.0000	
The following items are not illustrated				
19		TUBE,SILICONE-.25ID X 12.0"LG	11707.1000	
		TUBE,SILICONE-.25ID x 36.0"LG	11707.1001	
		TUBE,SILICONE-.25ID X 120.0"LG	11707.1002	

PLATFORM BASE & TRAY ASSEMBLIES



JDF-2X



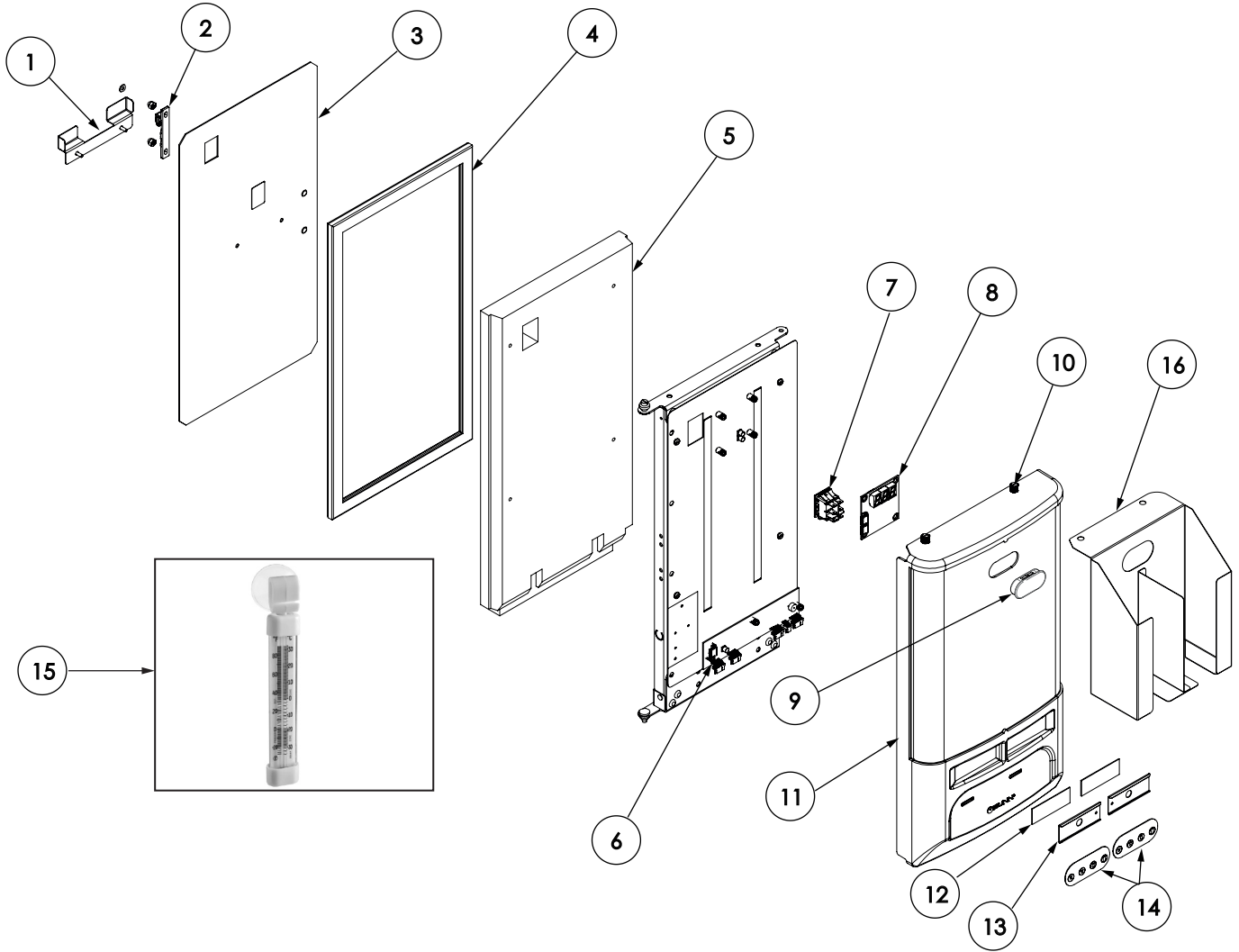
PLATFORM BASE & TRAY ASSEMBLIES

ITEM	QTY	DESCRIPTION	PART NO.	NOTES
1	1	BASE WLDMT, PLATFORM JDF-2S FF		
2	4	MAGNET LATCH ASSY, QTY-1	57478.1000	Qty-4 Per Tray
	4	MAGNET LATCH MTG, BIB BAG		
	4	MAGNET LATCH ARM, BIB BAG		
	4	NUT, HEX 10-32 STL ZINC PLATED	00910.0001	Not Illustrated
	4	MAGNET, .5 DIA X .50 12.3 LBS	39475.0000	
	4	SCREW, TRH PHL LOCK 10-32 X .38 STL ZINC	57526.0001	
3	2	KIT, TRAY ASSY BIB JDF-2S MAG	57445.1001	Includes Item 2, Qty-4
4	2	SHELF WLDMT, PLATFORM JDF-2S FF		
5	8	SCREW, TRH SLTD SST 6-32x.25 LKG	01308.0002	
The following items are not illustrated				

INNER AND OUTER DOOR ASSEMBLY



JDF-2X



INNER AND OUTER DOOR ASSEMBLY

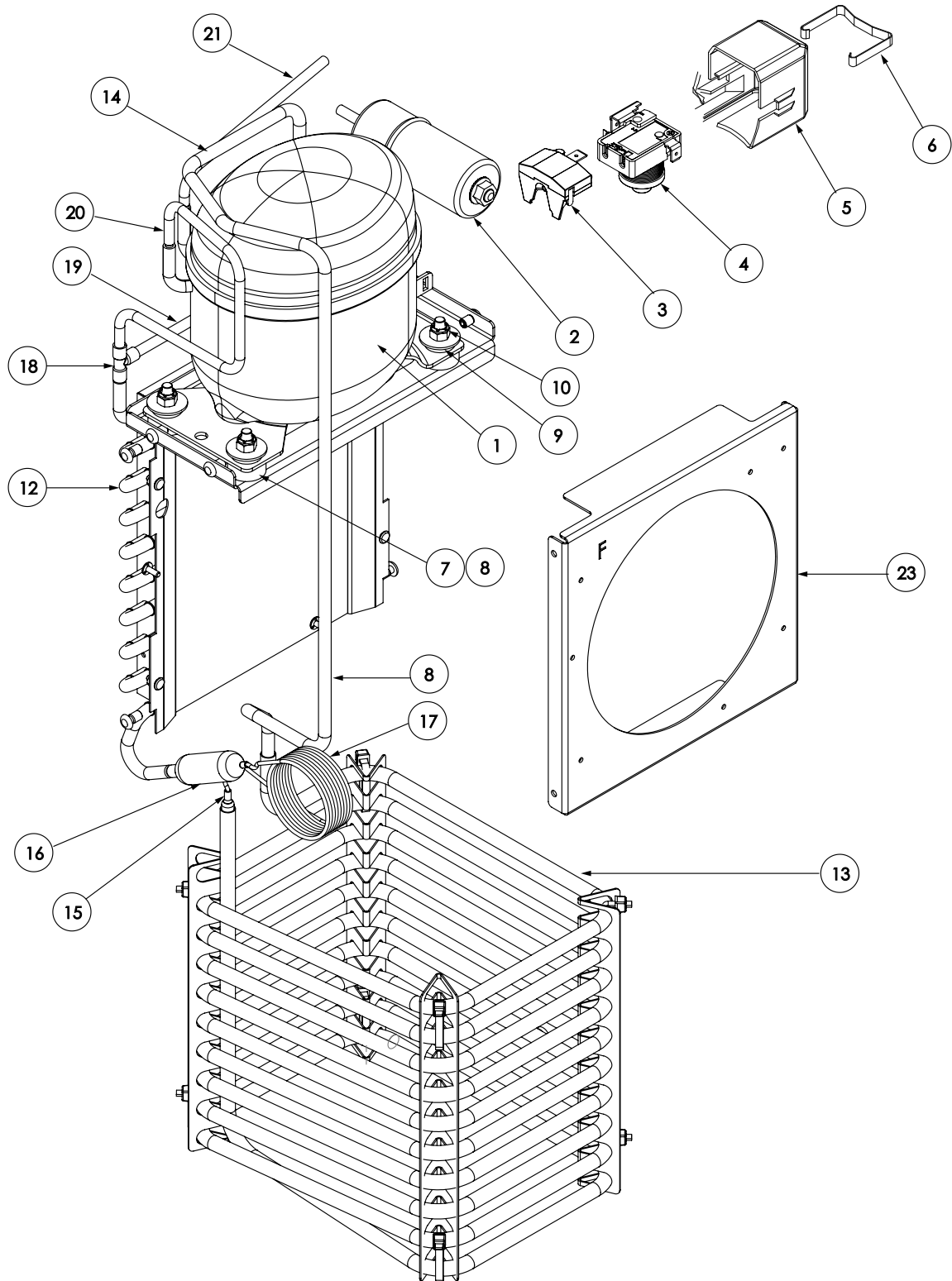
ITEM	QTY	DESCRIPTION	PART NO.	NOTES
1	1	BRACKET, THERMO		
	2	SCREW, HEX, #8-32 X .38"	02340.0001	
2	1	KEEPER, CABINET LATCH	34667.0001	
	2	NUT, ACORN #6-32	02319.0000	
3	1	PANEL, INNER		
4	1	GASKET, DOOR	38568.0002	
5	1	FOAM DOOR, INNER		
6	1	CBA, JDFS PC 4 SW	50477.1000	
7	1	SWITCH, ROCKER DPDT ON-OFF-ON	52922.0001	
8	1	CBA, DISPLAY JDF2S/4S	57177.1000	
9	1	PLUG, CLEAR WINDOW OVAL		
10	2	SCREW, CAPTIVE 10-32 X .50 SST	37988.0001	
11	1	COVER, DOOR	38476.1004	
12	2	DECAL, FLAVORS-JUICE FAST FLOW	32861.0022	
13	2	HOLDER, FLAVOR LABEL	37018.0001	
14	2	SWITCH, MEMBRANE FOUR BUTTON	50490.1001	
15	1	THERMOMETER, 3.5 IN TUBE JDF-FF (MCD)	57443.0000	
16	1	KIT, LID HOLDER WLDMT CLEAR COATED W/PAD	57167.1005	
The following items are not illustrated				
17	1	DECALS, FLAVORS JDF (MCD)	32861.0023	

JDF-2X REFRIGERATION GROUP



Refrigeration System

JDF-2X



JDF-2X REFRIGERATION GROUP

Refrigeration System

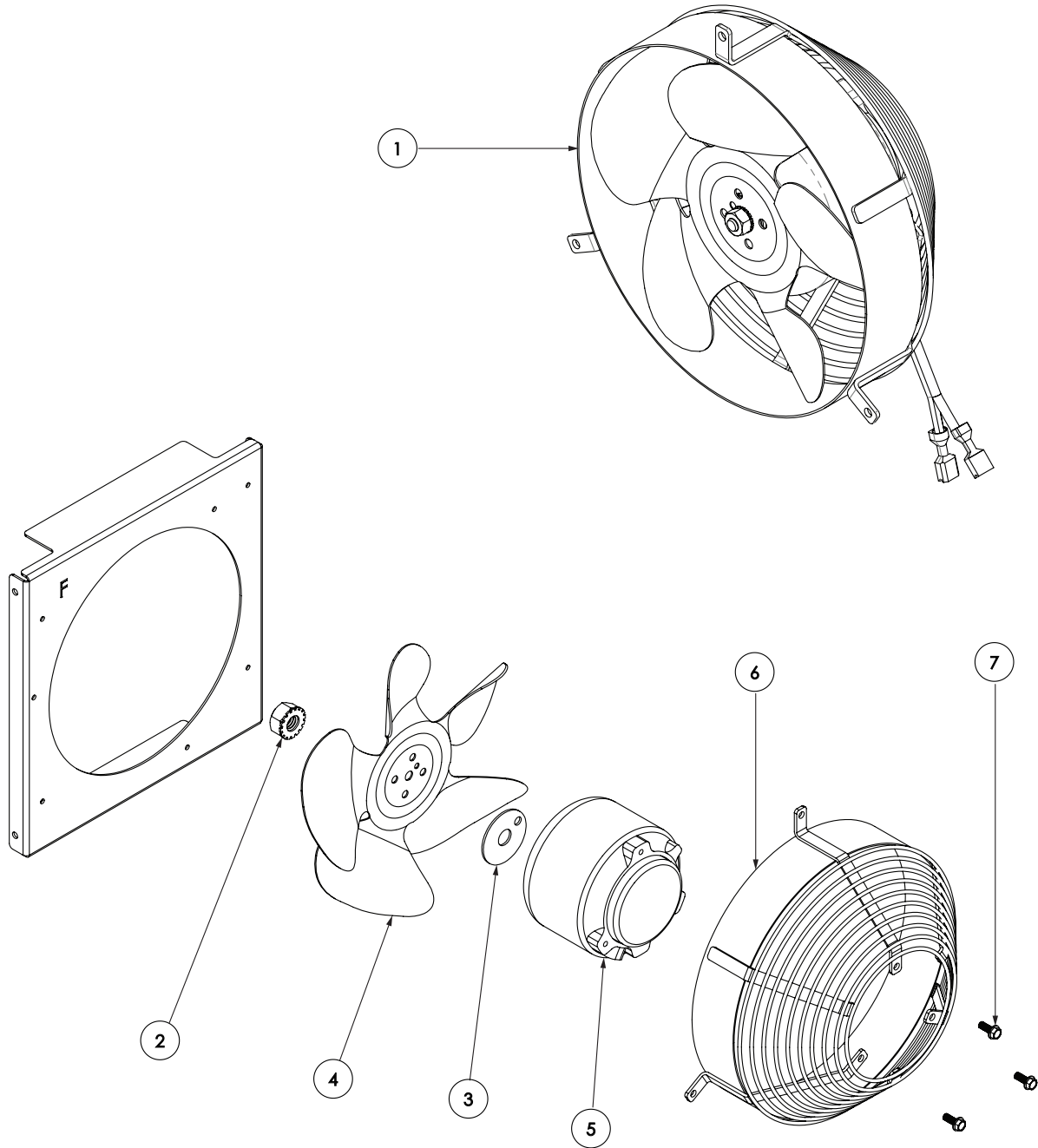
ITEM	QTY	DESCRIPTION	PART NO.	NOTES
1	1	COMPRESSOR ASSY, 120V MODEL: NBC30NR	58780.0000	NS
		COMPRESSOR ASSY, 230V MODEL: NBC30NG	58780.0001	
2	1	CAPACITOR, START COMP 50 MFD 330V NBC	58779.0000	
		CAPACITOR, START COMP 61 MFD 330V NBC	58779.0001	
3	1	OVERLOAD, DRB COMP 120V 60HZ NBC30NR	58778.0000	
		OVERLOAD, DRB COMP 230V 50/60HZ NBC30NG	58778.0001	
4	1	RELAY, COMP 120V 60HZ NBC30NR	58777.0000	
		RELAY, COMP 230V 50/60HZ NBC30NG	58777.0001	
5	1	COVER, ELECTRICAL COMP NBC	59077.0000	
6	1	CLIP, ELECTRICAL COVER COMP NBC	59078.0000	
7	4	GROMMET, COMPR MOUNTING	58782.0000	
8	4	SLEEVE, COMPR MOUNTING	58781.0000	
9	4	WASHER, .281 ID x 1.00 OD x .060 THK SST	21431.0003	
10	4	NUT, ELASTIC LOCK-.25-20 SST	00987.0001	
11	1	FRAME ASSY, JDF-2X 58891.0000		Not Illustrated
12	1	CONDENSER, JDF-2X 29951.0006	29951.0006	
13	1	COIL ASSY, EVAPORATOR W/SPACER JDF-2S	47581.0000	
14	1	TUBE, SUCTION EVAP/COMPR JDF-2X 54494.0002	54494.0002	NS
15	1	CAP TUBE, EVAPORATOR ADAPTOR	32777.0000	
16	1	DRYER ASSY, FILTER .093 ID X .250 ID R290 32256.0004	32256.0004	
17	1	CAP TUBE, COILED JDF-2X / NITRON 59032.0000	59032.0000	
18	1	TEE, ACR-CU .25 X .25 X .25 59056.0000	59056.0000	
19	1	TUBE, COPPER .25 OD X 8.0 LG 34212.0006	34212.0006	NS
20	1	TUBE, DISCHARGE COMPR/CONDR JDF-2S 54271.0001	54271.0001	NS
21	1	TUBE, PROCESS JDF-2X/NITRON 7.0" 38937.0005	38937.0005	NS
22	2	TIE, CABLE-NYL BLK 5.6LG .142W 36329.0002	36329.0002	Not Illustrated NS
23	1	BRACKET, COND/FAN MTG JDF-2X	58920.0000	NS
24	4	NUT, KEPS #6-32	00973.0001	
The following items are not illustrated				

JDF-2X REFRIGERATION GROUP



Condenser Fan Assembly

JDF-2X



JDF-2X REFRIGERATION GROUP

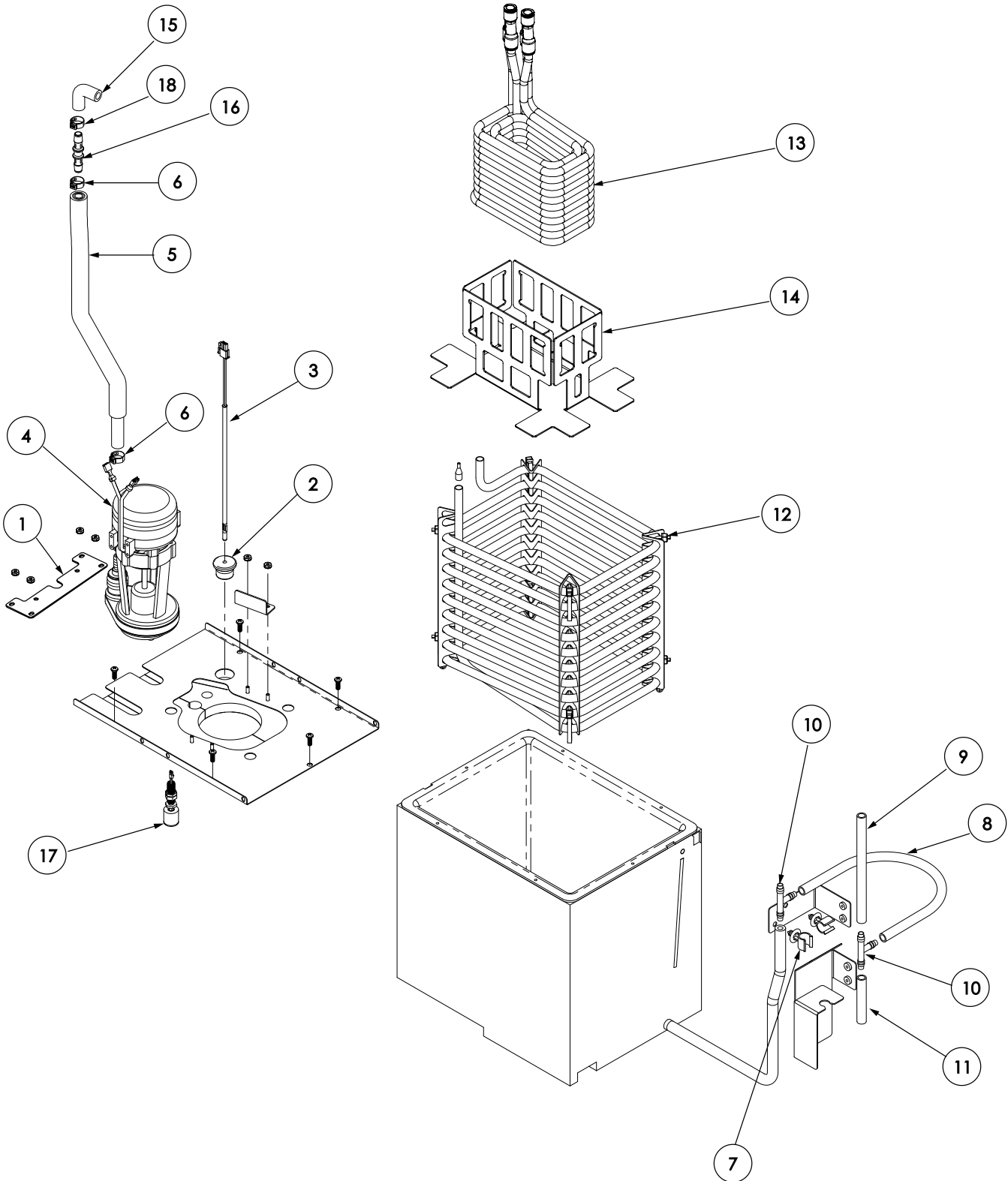
Condenser Fan Assembly

ITEM	QTY	DESCRIPTION	PART NO.	NOTES
1	1	KIT, CONDENSER 120V WIRE GUARD FAN ASSY	49292.1002	Includes Items 2-7
		KIT, CONDENSER 230V WIRE GUARD FAN ASSY	49292.1003	Includes Items 2-7
2	1	NUT, KEPS .25-20 ZINC PLTD	23700.0000	
3	1	SILENCER, FAN .032 THK	27258.0000	
4	1	BLADE, CONDENSER FAN 7" DIA	33602.0000	
5	1	MOTOR W/TERMS, CONDENSER FAN 115V	33603.0003	
		MOTOR W/TERMS, CONDENSER FAN 230V	33603.0004	
6	1	MOUNT, WIRE GUARD 7.00 IN FAN BLADE	52454.0004	
7	3	SCREW, 8-36 x .437 THREAD FORMING	27243.0000	
The following items are not illustrated				

WATER TANK ASSEMBLY



JDF-2X



WATER TANK ASSEMBLY

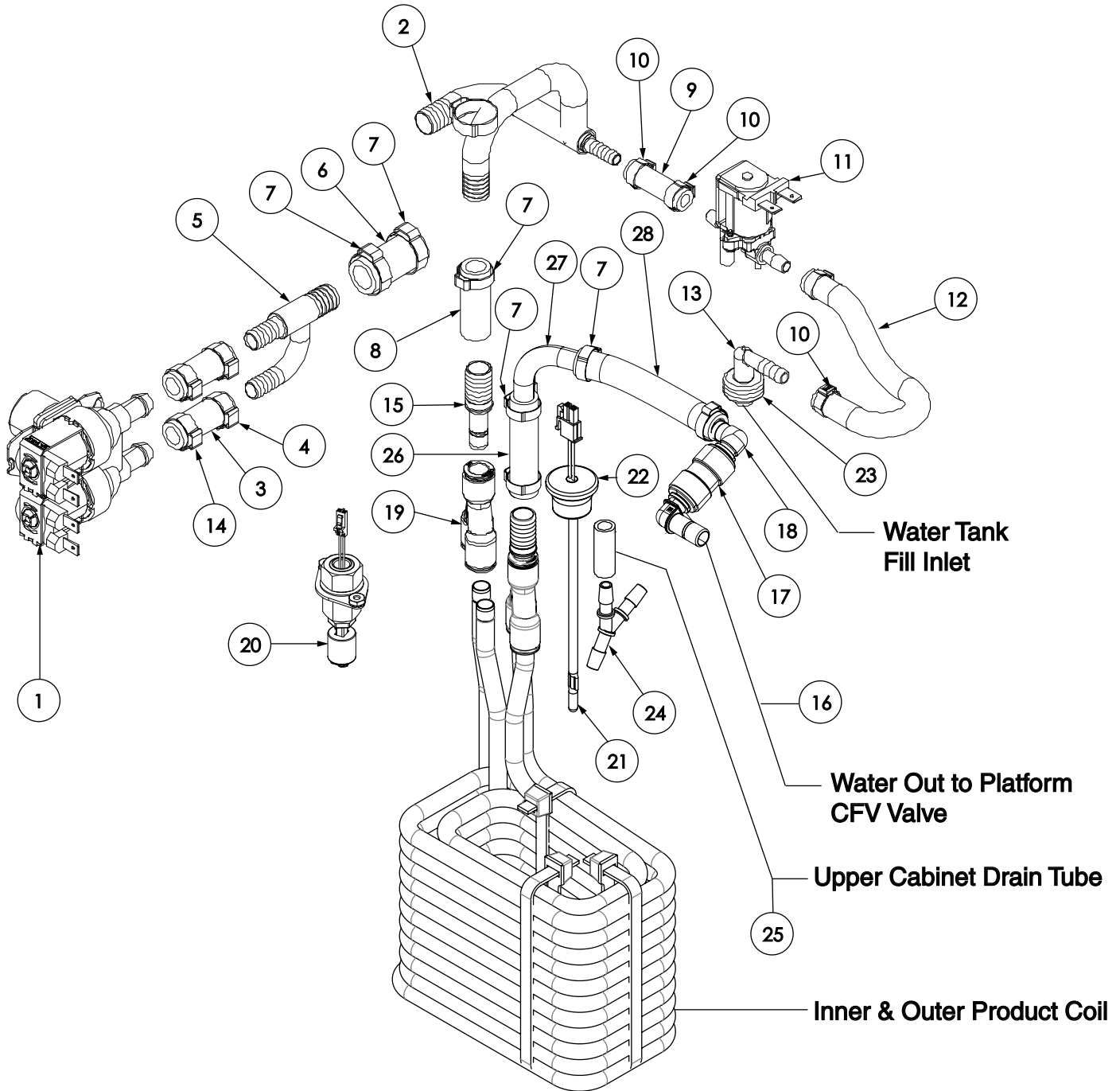
ITEM	QTY	DESCRIPTION	PART NO.	NOTES
1	1	BRACKET	38833.0008	
	4	NUT, KEPS #6-32	00973.0001	
2	1	GROMMET	33801.0003	
3	1	PROBE, TEMPERATURE	28891.1000	
4	1	PUMP ASSY 120/230VAC	53761.0003	
5	1	TUBE, SILICONE .313 ID X 22.00 LG		Order Item 21
		INSULATION,TUBE 1/2IDX3/16W X 6FT		Order Item 19
6	2	CLAMP .539 - .638"	21275.0013	
7	2	CLIP, TUBE MOUNTING	27410.0000	
8	1	TUBE, SILICONE .25" ID X 7.0"		Order Item 20
9	1	TUBE, SILICONE .25" ID X 6.25"		Order Item 20
10	2	TEE .25" BARB	38605.0000	
11	1	TUBE, SILICONE .25" ID X 3.0"		Order Item 20
12	1	COIL ASSY, EVAPORATOR W/SPACER JDF-2S (INCLUDES SPACERS & TIES)	47581.0000	
13	1	PRODUCT COIL ASSY	47885.1006	Includes Item 14 & 22
14	1	BASKET, COIL	50548.0003	
15	1	ELBOW	45928.0000	
16	1	CONNECTOR .38" BARB	51902.0000	
17	1	SWITCH ASSEMBLY, .58 DIAMETER FLOAT W/BHD & NUT	55112.0001	
	1	BULKHEAD .125 NPT, SST		
	1	LOCK WASHER	49830.0000	
	1	NUT, HEX SST. .50-20 UNF	29264.0000	
18	1	CLAMP, HOSE-SNAP TYPE.59/.66ID	12422.0001	
The following items are not illustrated				
19		INSUL,TUBE 1/2IDX3/16W X 6FT	M2337.1000	
20		TUBE,SILICONE-.25ID X 12.0"LG	11707.1000	
		TUBE,SILICONE-.25ID x 36.0"LG	11707.1001	
		TUBE,SILICONE-.25ID X 120.0"LG	11707.1002	
21		TUBE, SILICONE .313 ID x 12.00 LG	28526.1000	
		TUBE, SILICONE .313 ID x 36.00 LG	28526.1001	
		TUBE, SILICONE .313 ID x 60.00 LG	28526.1002	
22		TIE, CABLE-NYL BLK 5.6LG .142W	36329.0002	

WATER TANK ASSEMBLY



Water Tank Inlet Line & Product Coil

JDF-2X



WATER TANK ASSEMBLY

Water Tank Inlet Line & Product Coil

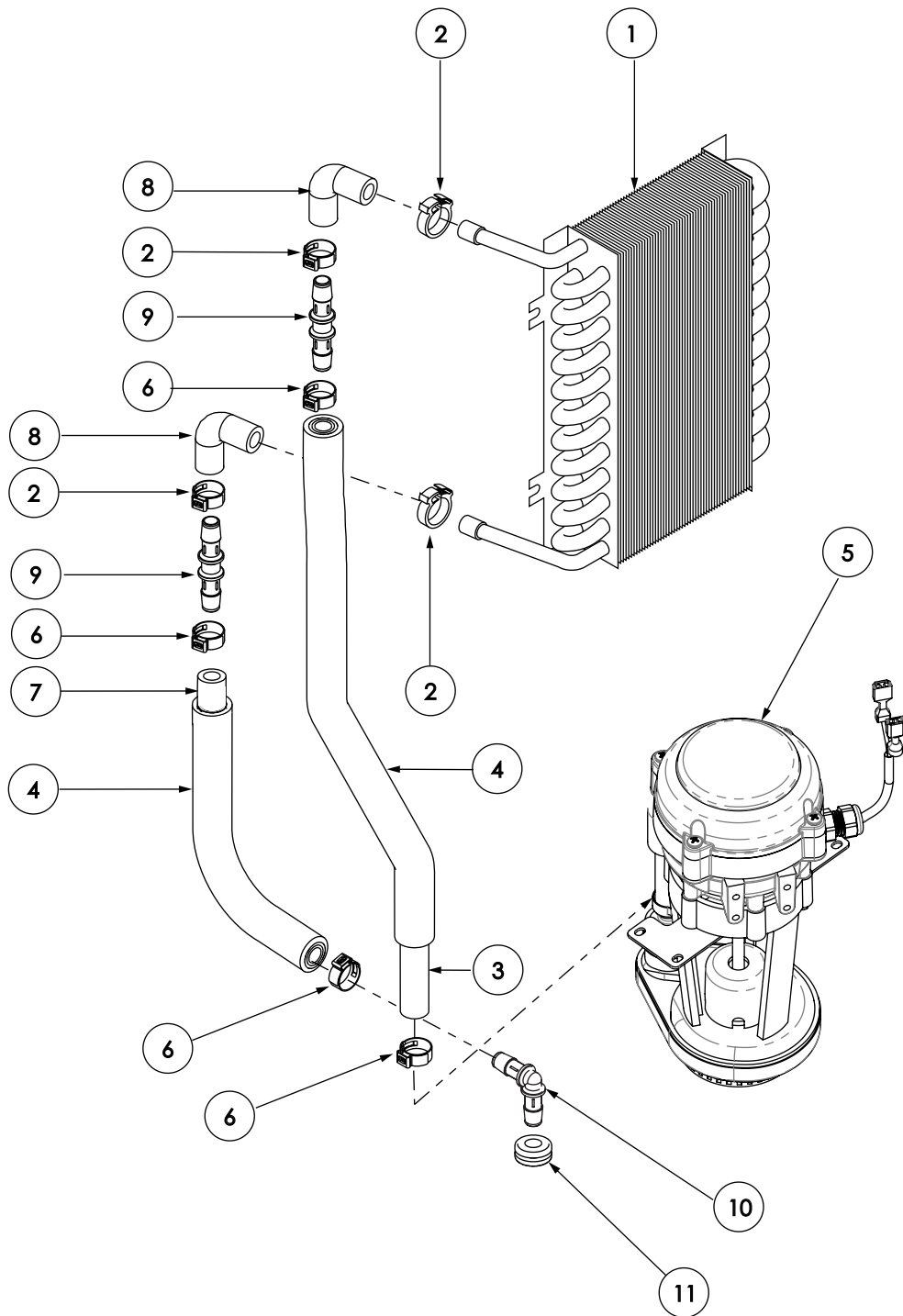
ITEM	QTY	DESCRIPTION	PART NO.	NOTES
1	1	VALVE, INLET DUAL 24VDC W/O FLOW WASHER	57446.0000	
2	1	TUBE WLDMT, 1/2 WATER INLET JDF-2S	57032.0001	
3	2	HOSE, .38 ID X 1.5 LG BRAIDED WHT LINE		Order Item 29
4	2	CLAMP, SST-.539/.638 DIA#16.2 LIGHT BLUE	21275.0013	
5	1	FITTING WLDMT,Y 3/8 X 1/2 BARB W/CHK SST	57447.0000	
6	1	HOSE, .510 ID X 1.5 LG BRAIDED WHT LINE		Order Item 30
7	8	CLAMP, SST-.701/.827 DIA 21.0mm	21275.0014	
8	1	HOSE, .510 ID X 2.0 LG BRAIDED WHT LINE		Order Item 30
9	1	HOSE, .265 ID X 1.5 LG BRAIDED RED LINE		Order Item 31
10	4	CLAMP, SST-.425/.523 DIA13.3	21275.0001	
11	1	VALVE, 24VDC .250 BARB .088 ORIFICE	56009.0000	
12	1	TUBE, SILICONE .25ID X 6.5LG		Order Item 32
13	1	FITTING, ELBOW .25 x .38 BARB	32656.0000	
14	2	CLAMP, SST-.563/.661 DIA#16.8	21275.0012	
15	2	FITTING, 3/8 STEM X 1/2 BARB SST F-7673	57291.0001	
16	1	FITTING, ELBOW 1/2 PUSH TO CONN	57264.0000	
17	1	FITTING, UNION 1/2 PUSH TO CONN	57263.0000	
18	1	FITTING, ELBOW 1/2 STEM X 1/2 BARB	57142.0000	
19	2	FITTING, 'Y' 3X .375 OD PUSH-TO-CON	49955.0001	
20	1	SWITCH ASSEMBLY, .58 DIAMETER FLOAT W/BHD & NUT	55112.0001	
21	1	PROBE, TEMP & DRY PLUG 7.75LG	28891.1000	
22	1	GROMMET, TEMP SENSOR	33801.0003	
23	1	GROMMET, SBR .375 ID X .500 HOLE	54234.0000	
24	1	FITTING,"Y" BARB .25 ID HOSE	37290.0001	
25	1	TUBE,SILICONE .25ID X 9.0 LG		Order Item 32
26	1	HOSE, .510 ID X 3.0 LG BRAIDED WHT LINE		Order Item 30
27	1	FITTING, 90° .50 BARB SST F-9015	55744.0002	NS
28	1	HOSE, .510 ID X 4.75 LG BRAIDED WHT LINE		Order Item 30
The following items are not illustrated				
29		HOSE, .38 ID X 12.0 LG BRAIDED WHT LINE	54496.1000	
		HOSE, .38 ID X 36.0 LG BRAIDED WHT LINE	54496.1001	
		HOSE, .38 ID X 120.0 LG BRAIDED WHT LINE	54496.1002	
30		HOSE, BRAIDED .510 ID x 12.0 WHT LINE	54492.1000	
		HOSE, BRAIDED .510 ID x 36.0 WHT LINE	54492.1001	
		HOSE, BRAIDED .510 ID x 120.0 WHT LINE	54492.1002	
31		HOSE, .265 ID X 12.0 LG BRAIDED RED LINE	54497.1000	
		HOSE, .265 ID X 36.0 LG BRAIDED RED LINE	54497.1001	
		HOSE, .265 ID X 120.0LG BRAIDED RED LINE	54497.1002	
32		TUBE,SILICONE-.25ID X 12.0"LG	11707.1000	
		TUBE,SILICONE-.25ID x 36.0"LG	11707.1001	
		TUBE,SILICONE-.25ID X 120.0"LG	11707.1002	
33		INSUL, TUBE 1/2ID x 3/8W x 6FT	M2594.1000	

WATER TANK ASSEMBLY



Water Circulation Pump & Lines

JDF-2X



WATER TANK ASSEMBLY

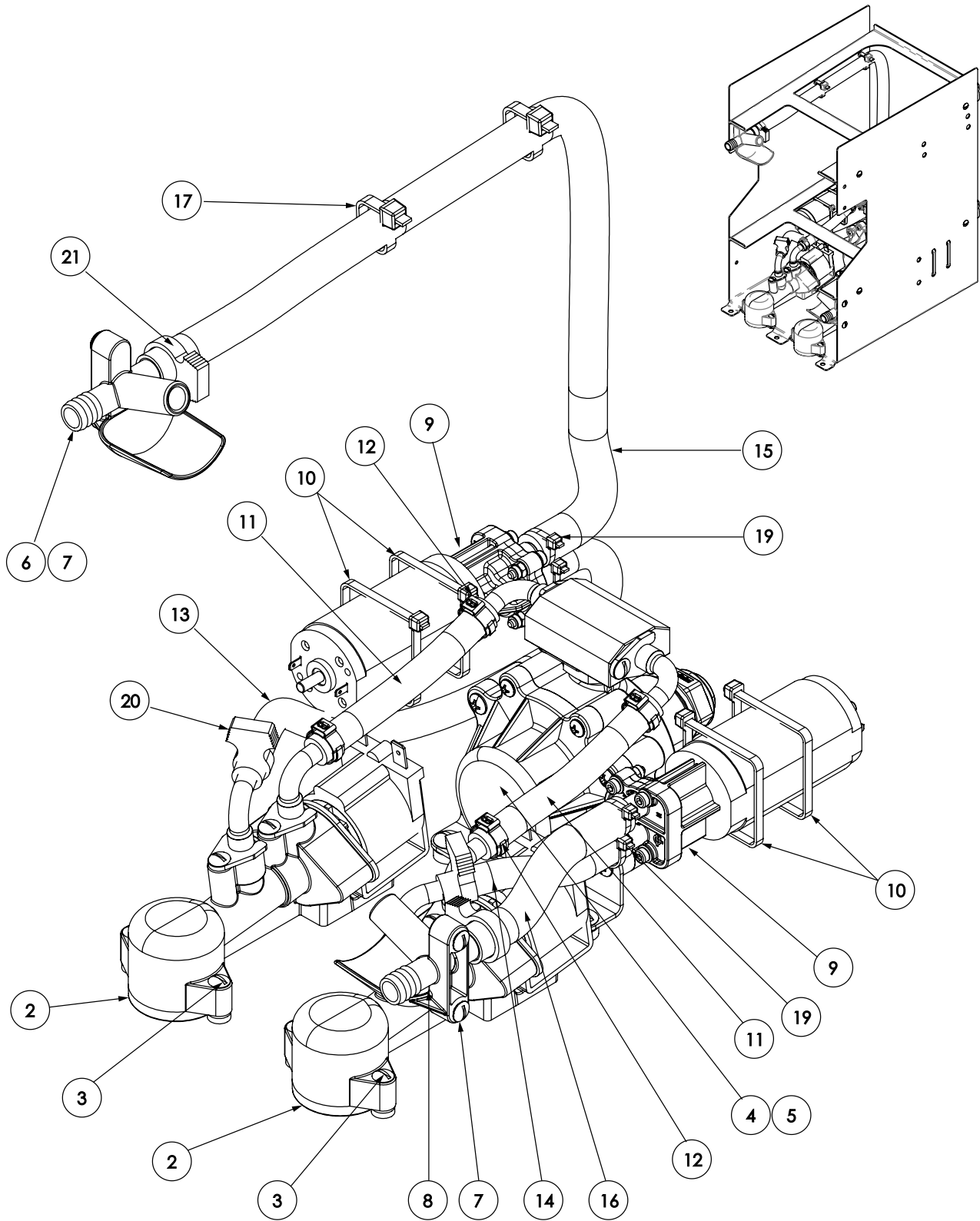
Water Circulation Pump & Lines

ITEM	QTY	DESCRIPTION	PART NO.	NOTES
1	1	COIL, UPPER CABINET (SEE UPPER CABINET & PANELS)		
2	4	CLAMP, HOSE-SNAP TYPE.59/.66ID	12422.0001	
3	1	TUBE, SILICONE .313 ID X 22.00 LG	28526.0058	Order Item 13
4	1	INSULATION,TUBE 1/2IDX3/16W X 6FT	M2337.0001	Cut To Length
5	1	PUMP ASSY 120/230VAC	53761.0003	
6	4	CLAMP .539 - .638"	21275.0013	
7	1	TUBE, SILICONE .313 ID x 7.50 LG	28526.0065	Order Item 13
8	2	ELBOW, .375 ID X 1.25 LG	45928.0000	
9	2	CONNECTOR, UNION .38 X .38 KYNAR	51902.0000	
10	1	ELBOW, .38 BARB	40348.0000	
11	1	GROMMET	54234.0000	
The following items are not illustrated				
12		TAPE, CORK-PIPE INSULATING	M2546.1000	Use As Required
13		TUBE, SILICONE .313 ID X 12.00 LG	28526.1000	Cut To Length
		TUBE, SILICONE 313 ID X 36.00 LG	28526.1001	Cut To Length
		TUBE, SILICONE 313 ID X 60.00 LG	28526.1002	Cut To Length

DISPENSE PLATFORM ASSEMBLY



JDF-2X



DISPENSE PLATFORM ASSEMBLY

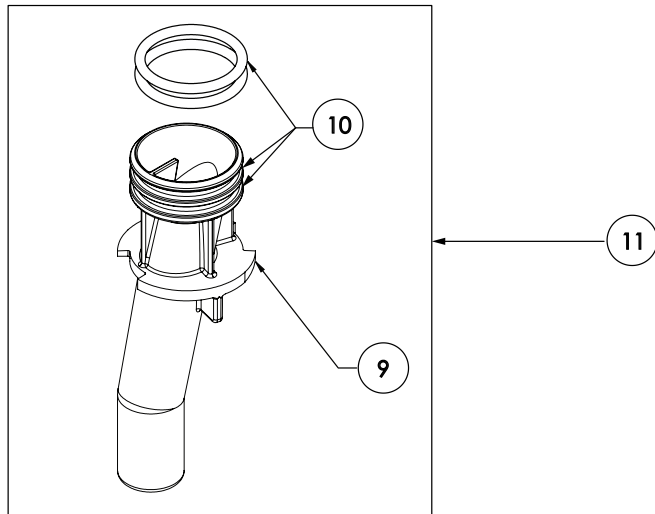
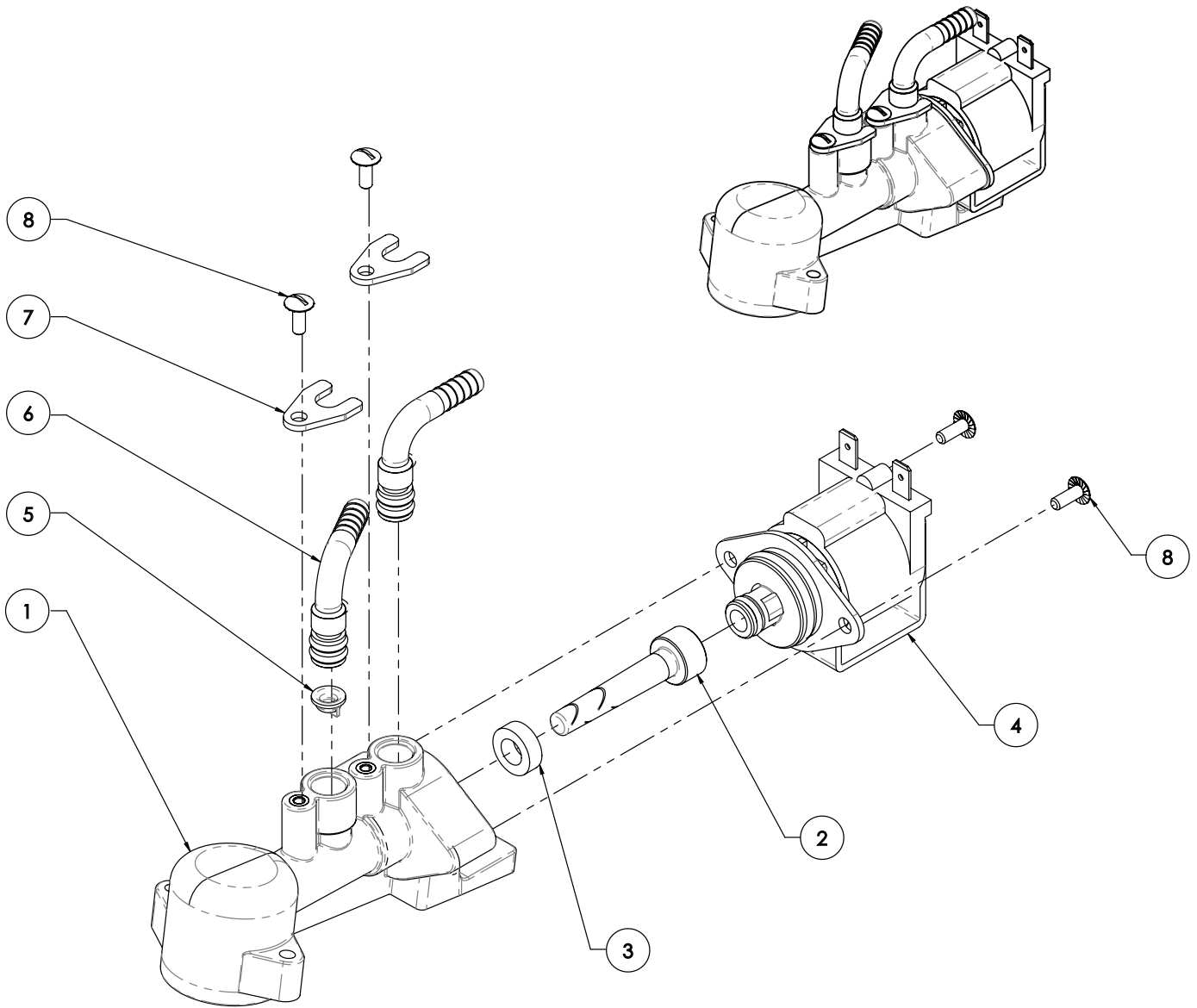
ITEM	QTY	DESCRIPTION	PART NO.	NOTES
2	2	VALVE ASSY, FAST FLOW JDF	56890.1000	
3	4	SCREW,TRH SLTD SST 6-32 X .62LK	02367.0002	
4	1	VALVE ASSY, CFV 2X-3 DUAL OUTLET TEE	57037.1001	
5	2	SCREW, TRH LKG PATCH 10-32x.31	01326.0002	
6	1	FITTING, LEFT BOTTLE ADAPTER JDF COKE	38120.0008	
7	4	SCREW, TRH SERR SST 6-32x.38	01347.0000	
8	1	FITTING, RIGHT BOTTLE ADAPTER JDF COKE	38120.0009	
9	2	PUMP, GEAR 24VDC DGD09N	56893.0000	
10	4	TIE, CABLE-NYLON BLK 8.0 LG		
11	2	HOSE, .265 ID X 3.5 LG BRAIDED RED LINE		Order Item 22
12	4	CLAMP, SST-.425/.523 DIA13.3	21275.0001	
13	1	TUBE, NORPRENE .25ID X 12.0LG		Order Item 23
14	1	TUBE, NORPRENE .25ID X 3.00LG		Order Item 23
15	1	TUBE, SILICONE 8MM ID X 12MM OD X 16.5LG		Order Item 24
16	1	TUBE, SILICONE 8MM ID X 12MM OD X 4.00LG		Order Item 24
17	2	TIE, CABLE-NYL BLK 5.6LG .142W		
18	1	WIRING HARNESS, PLATFORM-JDF FF	38873.0003	Not Illustrated, Go to Wiring Harnesses
19	4	TIE, CABLE-NYLON BLK 4.04 LG	36329.0000	
20	2	CLAMP, HOSE-SNAP TYPE.40/.45ID	12422.0011	
21	2	CLAMP, HOSE-SNAP TYPE.53/.59ID	12422.0006	
The following items are not illustrated				
22	-	HOSE, .265 ID X 12.0 LG BRAIDED RED LINE	54497.1000	
		HOSE, .265 ID X 36.0 LG BRAIDED RED LINE	54497.1001	
		HOSE, .265 ID X 120.0LG BRAIDED RED LINE	54497.1002	
23		TUBE, NORPRENE .25ID x 12.0LG	28755.1000	
		TUBE, NORPRENE .25ID x 15.85	28755.1001	
		TUBE, NORPRENE .25ID x 22.20	28755.1002	
24		KIT, TUBE SILICONE 8MM IDX12MM OD 12IN	50731.1000	
		KIT, TUBE SILICONE 8MM IDX12MM OD 3FT	50731.1001	
		KIT, TUBE SILICONE 8MM IDX12MM OD 10FT	50731.1002	

DISPENSE PLATFORM ASSEMBLY



Dispense Valve & Nozzle Assembly (Exploded)

JDF-2X



DISPENSE PLATFORM ASSEMBLY

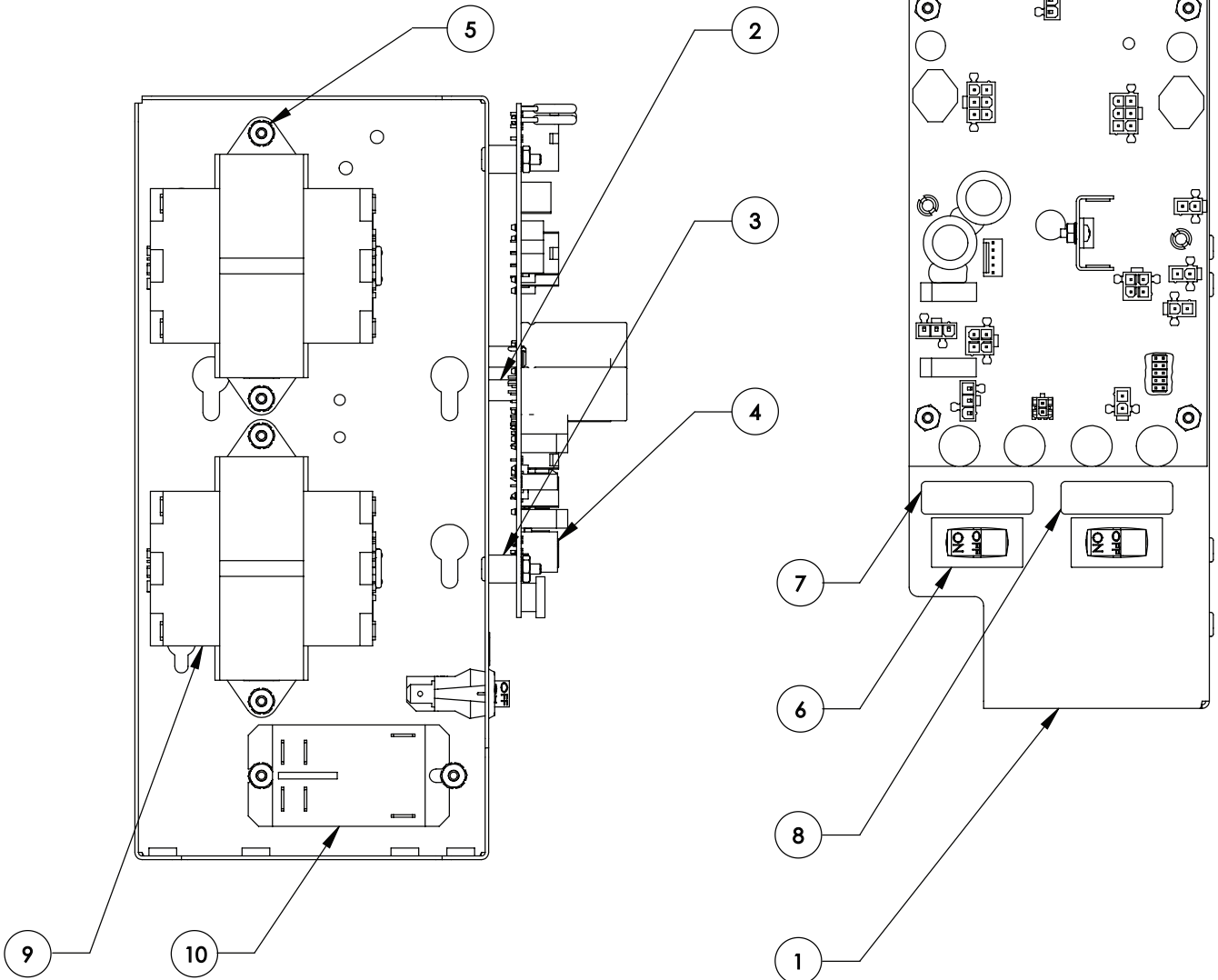
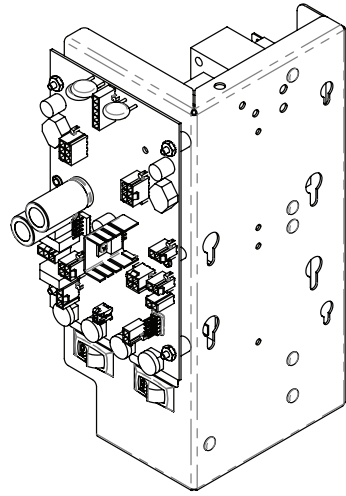
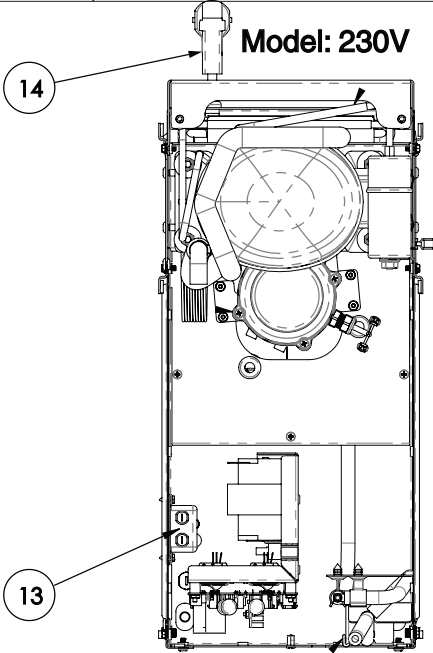
Dispense Valve & Nozzle Assembly (Exploded)

ITEM	QTY	DESCRIPTION	PART NO.	NOTES
1	1	VALVE BODY, FAST FLOW JDF		
2	1	INJECTOR, JDF HIGH FLOW .030	56889.0000	
3	1	GASKET, WATER NOZZLE	37990.0000	
4	1	SOLENOID, 24V FAST FLOW JDF	56888.0000	
5	1	CHECK VALVE, DOME .281	57013.0000	
6	2	FITTING, 90° .25 BARB X DOLE SST F-7128	44154.0003	NS
7	2	PLATE, FITTING RETAINER - DOLE	53223.0000	NS
8	4	SCREW, TRH SERR SST 6-32x.38	01347.0000	
9	1	NOZZLE, FAST FLOW VALVE JDF	56891.0000	
10	2	O-RING, -120 BUNA-N 60	32848.0000	Order Item 12
11	1	NOZZLE ASSY, FAST FLOW VALVE JDF	57004.1000	Includes Item 9 & 10
The following items are not illustrated				
12	-	LUBE, SILICONE HAYNES 1 OZ TUBE	44023.0001	

ELECTRICAL COMPONENTS



JDF-2X



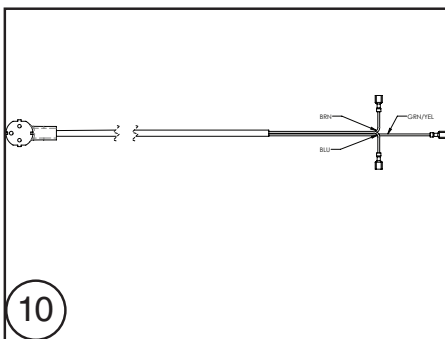
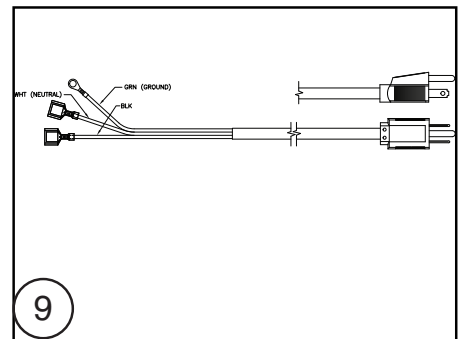
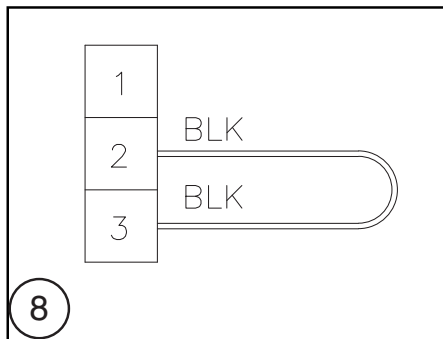
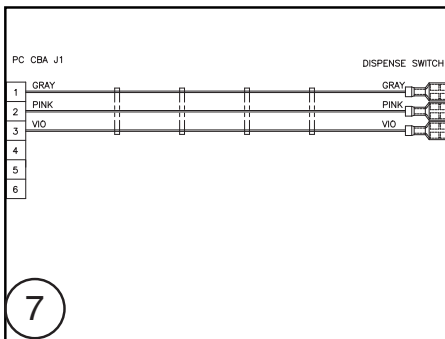
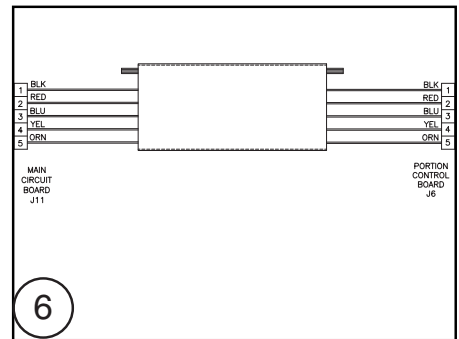
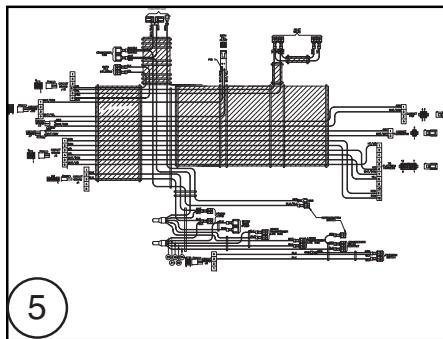
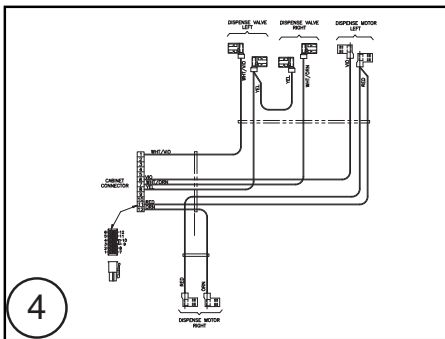
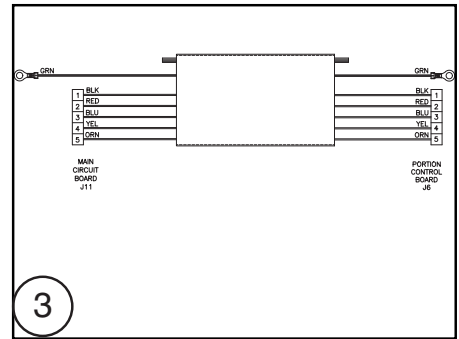
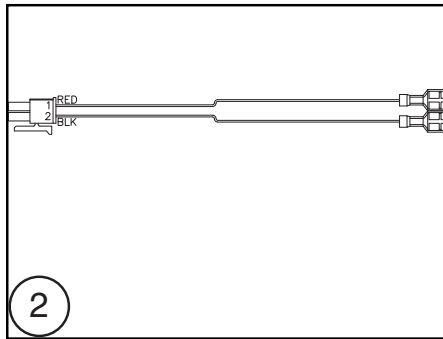
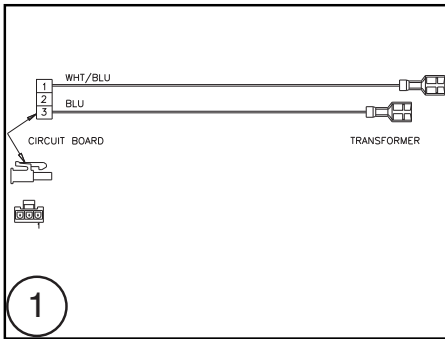
ELECTRICAL COMPONENTS

ITEM	QTY	DESCRIPTION	PART NO.	NOTES
1	1	BRACKET WLDMT, ELEC JDF-2X		
2	2	SPACER, PCB MTG #6 X .375 LONG	29081.0000	
3	4	SPACER, NYL-.171IDx.375ODx.375	01533.0000	
4	1	CBA, JDF-2S FAST FLOW (McDONALDS) 58822.0001	58822.0001	NS
5	10	NUT, KEPS 6-32 SST PASSIVATE	00973.0001	
6	2	SWITCH, ON/OFF 125/250V VISI-RED	04786.0005	
7	1	DECAL, SWITCH COMPRESSOR ON/OFF	41509.0001	
8	1	DECAL, PROGRAM ON/OFF	41509.0007	
9	2	TRANSFORMER, 120V 50/60 HZ	39305.0000	
	2	TRANSFORMER, 230V	39417.0001	
10	1	RELAY, 40A DPST NO 24VDC R-290 APPROVED	57775.0000	
11	2	WIRING HARNESS, CB/XFRMR	38870.0000	Not Illustrated, Go to Wiring Harnesses
12	1	WIRE HARN, COMP RELAY 2S/4S/NITRON R290 58982.0000	58982.0000	Not Illustrated, Go to Wiring Harnesses PR
13	1	FILTER, EMI 10AMP 250V RP100	29446.0009	Model: 230V
14	1	CORD ASSY,POWER 16A/250V EURO	42749.0037	Model: 230V

WIRING HARNESSES & POWER CORD



JDF-2X



WIRING HARNESES & POWER CORD

ITEM	QTY	DESCRIPTION	PART NO.	NOTES
1	1	WIRING HARNESS, CB/TRANSFORMER	38870.0000	
2	1	WIRING HARNESS, COMPRESSOR RELAY	58982.0000	
3	1	WIRING HARNESS, DOOR JDF-2 VPDS	41202.0013	
4	1	WIRING HARNESS, PLATFORM JDF FF	38873.0003	
5	1	WIRING HARNESS, MAIN JDF-2X VPDS	59069.0000	NS
6	1	WIRING HARNESS, FF TEMP PASS THRU	57453.0000	
7	1	WIRING HARNESS, JDF FF TEMP SEL	57455.0000	
8	1	WIRING HARNESS, JDF FF DUAL DISPENSE LOCK	57456.0000	
9	1	POWER CORD ASSY, 16/3 SJOW NEMA 5-15P	20630.0015	
10	1	CORD ASSY,POWER 16A/250V EURO	42749.0037	